



## **Ceramic Fiber Products**



Specialty Products, Inc.

## Lewco Ceramic Fiber Products

**Lewco Refractory Ceramic Fiber** products have two (2) temperature grades-2300°F(1260°C) and 2610°F(1430°C). Lewco Ceramic Fiber products feature a broad family of products that include Bulk Fiber, Needle Felted Blanket, Paper, and Textiles. These products are ideal for High Temperature furnaces, filtration, gasket applications, stress relieving, and other refractory applications.

## Lewco CSM Super Mat

**CMS Fiber Products** are manufactured using an Amorphous Calcium, Magnesium, Silicate (alkaline-earth-silicate greater than 18%) fiber which is soluble in body fluids. CMS Fiber Products are made from a long, spun fiber yielding excellent thermal conductivity and stability. These products are manufactured in an ISO 9001-2000 and ISO 14001-1996 Quality Control System.

## Ceramic Fiber Blanket RG & RGH 2610



Type	Lewco RG	Lewco RGH 2610	CSM Super Mat
Classify Temp	1260°C (2300°F)	1430°C (2610°F)	1260°C (2300°F)
Using Temp	2150°F	2460°F	1800°F
Melting Temp	3200°F	3200°F	2300°F
Chemical Composition			
Al <sub>2</sub> O <sub>3</sub>	46%	28-32%	
SiO <sub>2</sub>	53%	52-56%	57-67%
ZrO <sub>2</sub>		14-18%	
CaO+MgO			30-40%
Shrinkage (24hr)3%	2300°F	2460°F	1832°F
Diameter of Ceramic Fiber 3-4 microns			
Density lb/cu.ft. <sup>3</sup>	Thickness	Widths	
4,6,8	.5", 1", 1.5", 2"	24" & 48"	

## Lewco Bulk Fiber



### Bulk Fiber Application

- Expansion Joints
- Vacuum Cast Shapes
- Packing Material
- Acoustical Insulation
- Additive for Friction
- Materials, Cements, Textiles

## Product Characteristics

- Excellent Thermal Shock Resistance
- Light Weight
- Excellent Sound Absorption
- High Temperature Stability
- Superior Corrosive Resistance

Type	Bulk RG	Bulk RGH	Bulk CSM
Classify Temp	1260°C (2300°F)	1430°C (2610°F)	1260°C (2300°F)
Using Temp	2150°F	2460°F	1800°F
Melting Temp	3200°F	3200°F	2300°F
Chemical Composition			
Al <sub>2</sub> O <sub>3</sub>	46%	28-32%	
SiO <sub>2</sub>	53%	52-56%	57-67%
ZrO <sub>2</sub>		14-18%	
CaO+MgO			30-40%
Diameter of Ceramic Fiber 3-4 microns			
Shrinkage (24hr)3%	2300°F	2460°F	1832°F

# Lewco Ceramic Fiber Textile Products

**Lewco Ceramic Fiber Fabrics** are manufactured using ceramic fiber yarn reinforced with E-glass or stainless steel wire. These fabrics are ideal for many high temperature applications up to 2300°F (1260°C). Lewco Ceramic Fiber Fabrics can be laminated with aluminum foil or coated with a variety of compounds including Vermiculite, Silicone, PTFE, Acrylic, and Neoprene, 1 or 2 faces. These products are well suited for applications including Removable/Reusable Insulation Blankets, Stress Relieving, Gaskets and many more.

Thickness		Width		Length		Weave
mm	inch	mm	inch	meter	yard	
1.5	0.059	1000	39.37	30	32.8	Plain
2	0.079					
3	0.118					
5	0.197			25	27.3	Multi-layer
6	0.236			20	21.9	
9	.354			10	10.9	



twisted rope



lagging rope



3-ply rope



sleeving/tubing

**Lewco Round Braid and Square Braid** are dense and fabricated from high performance ceramic fiber yarn material braided around a core of ceramic fiber rope to form a packing in round or square braid.

Type	Diameter		Customer sizes upon request
Twisted Rope	3-50mm	1/8" to 2"	
3-Ply Rope	6-50mm	1/4" to 2"	
Sleeving/Tubing	12-50mm	1/2" to 2"	
Lagging Rope	10-50mm	5/12" to 2"	

**Lewco Tape, Drop-Warp Tape, and Tadpole** are manufactured from ceramic fiber yarn, reinforced by a core of glass filament or stainless steel wire for high strength retention at elevated temperatures.

Type	Width	
Lewco Tape	13-76mm	1/2" to 3"
Tadpole	Customer sizes upon request	
Drop-Warp Tape		



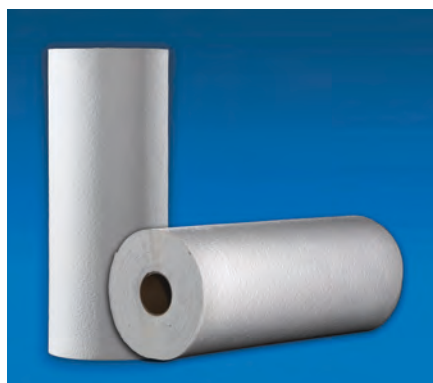
drop-warp tape

tape

tadpole

## Ceramic Fiber Paper

Paper is produced from high purity ceramic fibers. The material is noted for its excellent tensile strength and high temperature resistance.



Lewco Ceramic Paper		
Classify Temp - 1260°C (2300°F)		
Length 10-44mm	Widths 610mm & 1220mm 24" & 48"	Thickness 1-5mm (1/24" to 5/24")

**Application** - Expansion joint, high temperature gasket, heat shields, ladle refractory backup, fire protection, mold linings.

# Additional Lewco Products

## Insulating Lagging Tapes

Lewco maintains large inventories of different sizes of Fiberglass & Nomex® lagging tapes. Applications include Gasketing and Freeze & Personal protection insulation. Please contact Lewco for further information



Styles	Widths	Thickness	Length	Material
FT24	3/4", 1", 1-1/2", 2", 3", 4", 5", 6"	.065"	100ft.	Fiberglass Woven Flat
FT60	3/4", 1", 1-1/2", 2", 3", 4", 5", 6"	.125"	100ft.	Fiberglass Woven Flat
FT120	3/4", 1", 1-1/2", 2", 3", 4", 5", 6"	.0625"	100ft.	Fiberglass Woven Flat
NXF60	3/4", 1", 1-1/2", 2", 3", 4", 5", 6"	.125	50ft.	Nomex Aramid® Felted

## High-Temperature

## Insulation Textiles & Accessories for Fabricators



### Felts

- E Glass 1200°F
- Silica 1800°F
- Ceramic Fiber Blanket 2300°F

### Fabrics

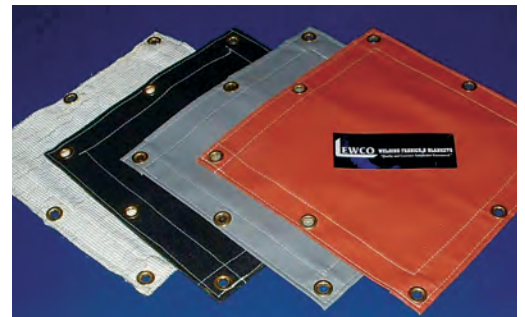
- Silica - 1800°F
- Fiberglass - 1000°F
- Silicone coated Fiberglass - 500°F
- PTFE Coated Fiberglass 500°F

### Accessories

- Threads
- Drawcords
- Hogring Staples & Tools
- SS "D" Ring Buckles
- Lacing Anchors
- Quilting Pins

## High Performance Safety Fabrics "Sparks, Spatter, Slag"

Lewco is a leader in the design, development and manufacturing of fabrics for use as spark, spatter & slag protection. Coated & un-coated fabrics available in roll goods and blankets (cut, hemmed, & grommetted). Please contact Lewco for more information.



"ISO 9001-2000"  
Certified



All Major Credit Cards Welcome.

**NIA**  
National Insulation  
Association

Member  
SWICA  
WIA  
ESICA  
SEICA  
MICA  
CSICA

**LEWCO**

Specialty Products, Inc.

Corporate Headquarters / Manufacturing & Distribution Center  
6859 Renoir Avenue • Baton Rouge, Louisiana 70806  
Phone 225.924.3221 • 1-800-221-6414 • Fax 225.927.2918  
[www.LewcoSpecialtyProducts.com](http://www.LewcoSpecialtyProducts.com) • Email [Lewco@LewcoSpecialtyProducts.com](mailto:Lewco@LewcoSpecialtyProducts.com)

This information is given in good faith and is believed to be accurate. It is intended for use by persons skilled in the art of fabrication and applying removable/reusable insulation or like products, as well as those working with welding curtains and fire blankets. All liabilities are borne by the user of these products. LEWCO does not take any responsibility for misuse of these products. LEWCO recommends testing before use.